



IP68 CABLE GLAND

Polyamide Cable Gland

Polyamide 6 and 6.6 are thermoplastic polymers. Both get soft and pour when heated, both get harden and solidified when cooled. This is the repeatable characteristic of polymers.

Polyamide 6.6 has some advantages comparing to Polyamide 6, as follows :

- 1- Polyamide 6.6 has higher thermal endurance comparing to Polyamide 6.
- 2- Melting and softening points, deformation temperature under load and maximum operating temperature are higher for Polyamide 6.6.
- 3- Polyamide 6.6 has a stronger material structure than Polyamide 6.
- 4- Tensile strength, bending resistance, impact endurance, high abrasive resistance, tensile, flexural and compressive elasticity modules are higher for Polyamide 6.6.

All of these thermal and mechanical advantages prove the better durability of products made of Polyamide 6.6 in outer environment conditions comparing to Polyamide 6.

On behalf of Onka Electric, we are using Polyamide 6.6 for our Cable Glands production and we clearly accept the superiority comparing to competing products made of Polyamide 6 in the market.

PG TYPE IP 68 POLYAMIDE CABLE GLAND

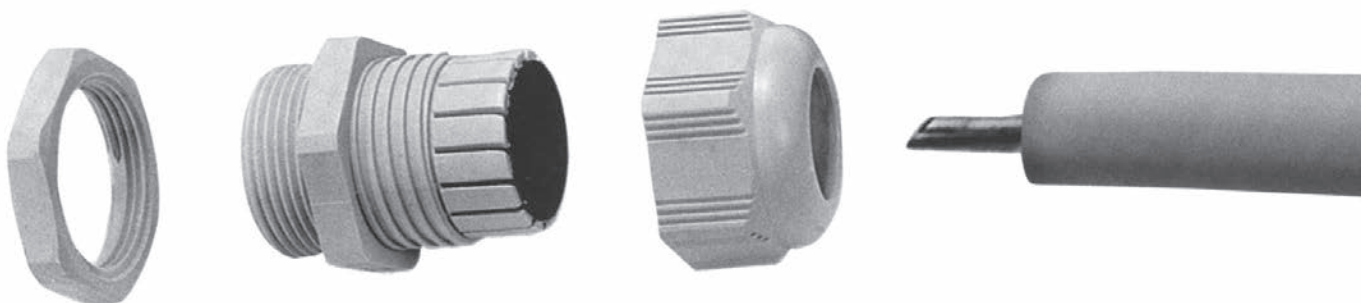


RAL 7001 CODE	RAL 7035 CODE	RAL 9005 CODE	SIZE	MOUNTING DIA C	CABLE DIE MIN-MAX B	THREAD LENGTH D	AA	CORNERS	BOX/CARTON
ONKA - 9000	ONKA - 9101	ONKA - 9102	PG-7	12.5	3-6	7	15	17	450 / 6750
ONKA - 9001	ONKA - 9111	ONKA - 9112	PG-9	15.5	4-8	7	18	20	300 / 4500
ONKA - 9002	ONKA - 9121	ONKA - 9122	PG-11	18.5	5-10	7	20	23	200 / 3000
ONKA - 9003	ONKA - 9131	ONKA - 9132	PG-13.5	20.5	6-12	7	22	25	175 / 2625
ONKA - 9004	ONKA - 9141	ONKA - 9142	PG-16	22.5	10-14	8	24	27	125 / 1875
ONKA - 9005	ONKA - 9151	ONKA - 9152	PG-21	28.5	13-18	8	30	34	75 / 1125
ONKA - 9006	ONKA - 9161	ONKA - 9162	PG-29	37.5	18-25	8	40	45	40 / 600
ONKA - 9007	ONKA - 9171	ONKA - 9172	PG-36	47.5	24-32	10	55	61	20 / 300
ONKA - 9008	ONKA - 9181	ONKA - 9182	PG-42	55.0	32-38	12	58	65	15 / 225
ONKA - 9009	ONKA - 9191	ONKA - 9192	PG-48	60.0	37-44	12	65	72	12 / 180

METRIC TYPE IP 68 POLYAMIDE CABLE GLAND



RAL 7001 CODE	RAL 7035 CODE	RAL 9005 CODE	SIZE	MOUNTING DIA C	CABLE DIE MIN-MAX B	THREAD LENGTH D	AA	CORNERS	BOX/CARTON
ONKA - 9050	ONKA - 9201	ONKA - 9202	M 12 x 1.5	12	3-6.5	10	15	17	450 / 6750
ONKA - 9051	ONKA - 9211	ONKA - 9212	M 16 x 1.5	16	5-10	10	22	25	200 / 3000
ONKA - 9052	ONKA - 9221	ONKA - 9222	M 20 x 1.5	20	6-12	10	24	27	150 / 2250
ONKA - 9053	ONKA - 9231	ONKA - 9232	M 25 x 1.5	25	13-18	10.5	33	38	75 / 1125
ONKA - 9054	ONKA - 9241	ONKA - 9242	M 32 x 1.5	32	18-25	16	42	48	40 / 600
ONKA - 9055	ONKA - 9251	ONKA - 9252	M 40 x 1.5	40	24-32	18	43	58	20 / 300



PG TYPE POLYAMIDE BLINDSTOP



Colour



Ral: 7035



Ral: 7001



Ral: 9005

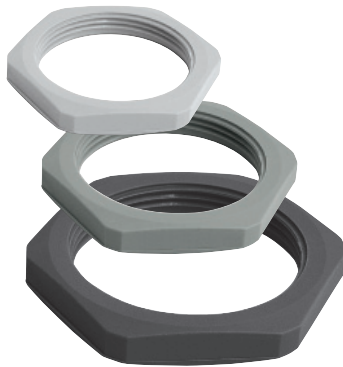
RAL 7001 CODE	RAL 7035 CODE	RAL 9005 CODE	SIZE	MOUNTING DIA C	PCS/BOX
ONKA - 9090	ONKA - 9301	ONKA - 9302	PG-7	12.5	250
ONKA - 9091	ONKA - 9311	ONKA - 9312	PG-9	15.5	250
ONKA - 9092	ONKA - 9321	ONKA - 9322	PG-11	18.5	250
ONKA - 9093	ONKA - 9331	ONKA - 9332	PG-13.5	20.5	250
ONKA - 9094	ONKA - 9341	ONKA - 9342	PG-16	22.5	250
ONKA - 9095	ONKA - 9351	ONKA - 9352	PG-21	28.5	250
ONKA - 9096	ONKA - 9361	ONKA - 9362	PG-29	37.5	150
ONKA - 9097	ONKA - 9371	ONKA - 9372	PG-36	47.5	100

RUBBER BLINDSTOP



CODE	SIZE	MOUNTING DIA C	PCS / BOX
ONKA-9490	PG-13.5	17	100
ONKA-9491	PG-16	22.8	100
ONKA-9492	PG-21	28.6	100
ONKA-9493	PG-29	37.3	100
ONKA-9494	PG-36	47	100
ONKA-9495	PG-42	55	50

PG TYPE POLYAMIDE NUTS



Colour



Ral: 7035



Ral: 7001



Ral: 9005

RAL 7001 CODE	RAL 7035 CODE	RAL 9005 CODE	SIZE	MOUNTING DIA C	PCS/BOX
ONKA - 9070	ONKA - 9401	ONKA - 9402	PG-7	12.5	250
ONKA - 9071	ONKA - 9411	ONKA - 9412	PG-9	15.5	250
ONKA - 9072	ONKA - 9421	ONKA - 9422	PG-11	18.5	250
ONKA - 9073	ONKA - 9431	ONKA - 9432	PG-13.5	20.5	250
ONKA - 9074	ONKA - 9441	ONKA - 9442	PG-16	22.5	250
ONKA - 9075	ONKA - 9451	ONKA - 9452	PG-21	28.5	250
ONKA - 9076	ONKA - 9461	ONKA - 9462	PG-29	37.5	150
ONKA - 9077	ONKA - 9471	ONKA - 9472	PG-36	47.5	100
ONKA - 9078	ONKA - —	ONKA - —	PG-42	55.0	100
ONKA - 9079	ONKA - —	ONKA - —	PG-48	60.0	100

METRIC TYPE POLYAMIDE NUTS



Colour



Ral: 7035



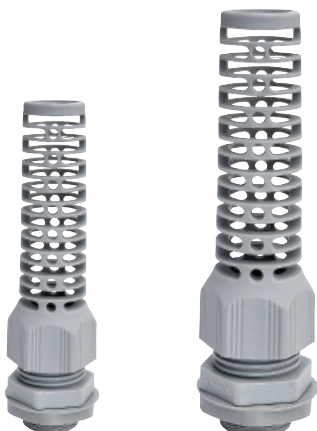
Ral: 7001



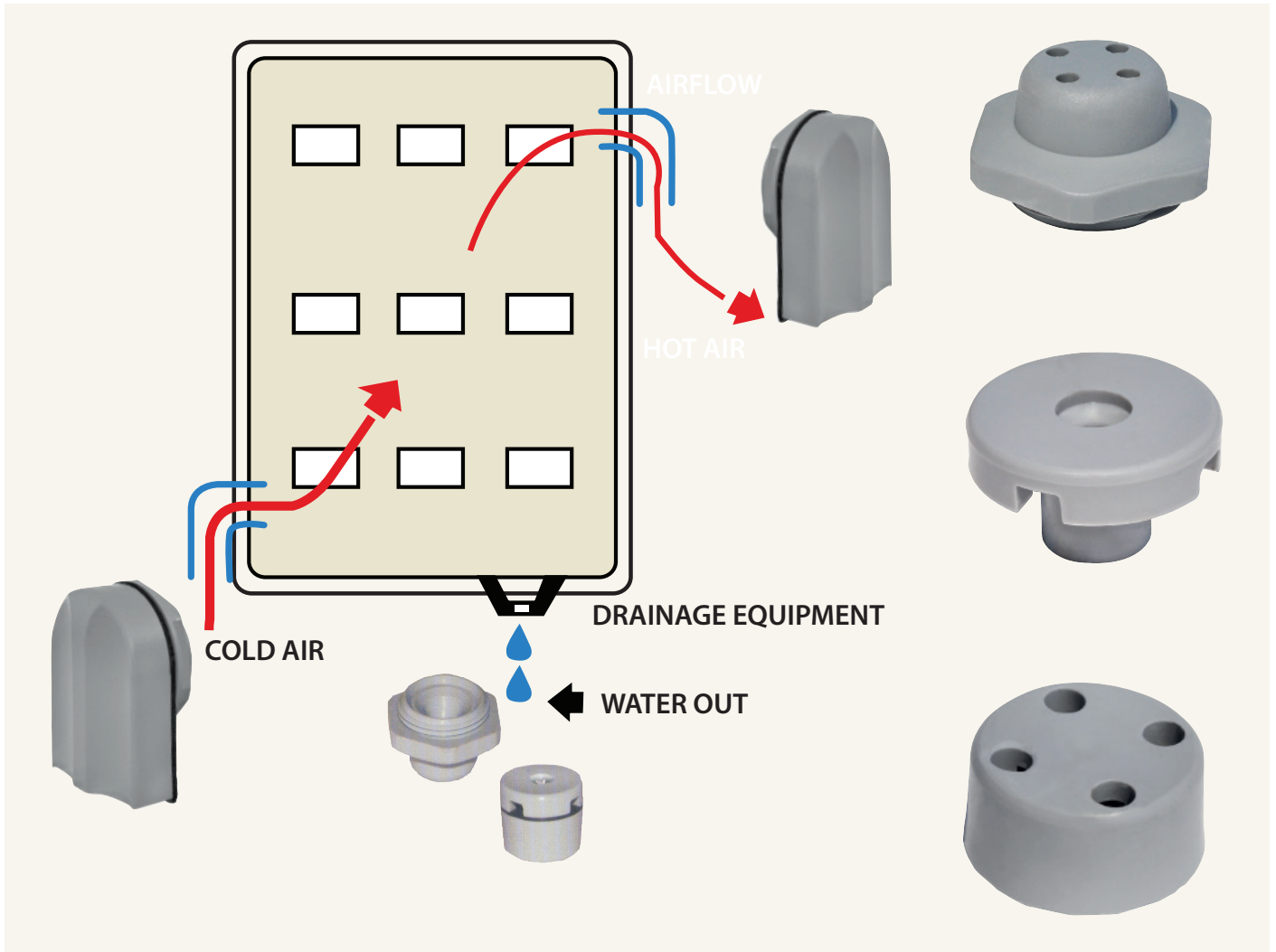
Ral: 9005

RAL 7001 CODE	RAL 7035 CODE	RAL 9005 CODE	SIZE	MOUNTING DIA C	PCS/BOX
ONKA - 9010	ONKA - 9011	ONKA - 9012	M 12 x 1.5	12	250
ONKA - 9013	ONKA - 9014	ONKA - 9015	M 16 x 1.5	16	250
ONKA - 9016	ONKA - 9017	ONKA - 9019	M 20 x 1.5	20	250
ONKA - 9020	ONKA - 9021	ONKA - 9022	M 25 x 1.5	25	250
ONKA - 9023	ONKA - 9024	ONKA - 9025	M 32 x 1.5	32	250
ONKA - 9026	ONKA - 9027	ONKA - 9028	M 40 x 1.5	40	250

PG & METRIC TYPE SPIRAL CABLE GLANDS



COLOUR	PG CODE	PG SIZE	METRIC CODE	METRIC SIZE	PCS/BOX
Ral: 7001	ONKA - 9275	PG 7	ONKA - 9475	M 12 x 1.5	200
	ONKA - 9281	PG 11	ONKA - 9478	M 16 x 1.5	100
	ONKA - 9284	PG 13.5	ONKA - 9481	M 20 x 1.5	80
	ONKA - 9290	PG 21	ONKA - 9484	M 25 x 1.5	30
Ral: 7035	ONKA - 9276	PG 7	ONKA - 9476	M 12 x 1.5	200
	ONKA - 9282	PG 11	ONKA - 9479	M 16 x 1.5	100
	ONKA - 9285	PG 13.5	ONKA - 9482	M 20 x 1.5	80
	ONKA - 9291	PG 21	ONKA - 9485	M 25 x 1.5	30
Ral: 9005	ONKA - 9277	PG 7	ONKA - 9477	M 12 x 1.5	200
	ONKA - 9283	PG 11	ONKA - 9480	M 16 x 1.5	100
	ONKA - 9286	PG 13.5	ONKA - 9483	M 20 x 1.5	80
	ONKA - 9292	PG 21	ONKA - 9486	M 25 x 1.5	30

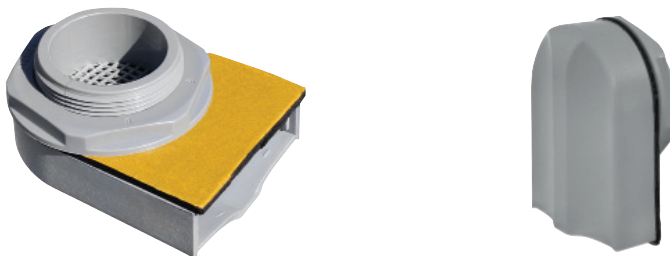


PANEL AIRFLOW BLINDSTOP



CODE	DIMENSION	PACKAGE
● ONKA - 9510	M 25 x 1.5 Panel Airflow Blindstop	100
● ONKA - 9511		
● ONKA - 9512		

PANEL AIRFLOW EQUIPMENT



CODE	DIMENSION	PACKAGE
● ONKA - 9500	M 40 x 1.5 Panel Airflow Equipment	50
● ONKA - 9501		
● ONKA - 9502		

DRAINAGE EQUIPMENT



CODE	DIMENSION	PACKAGE
● ONKA - 9520	M 16 Drainage Equipment	100
● ONKA - 9521		
● ONKA - 9522		